

15 Meadows Close, BANGALOW

Less than 5 minutes walk to Main Street

- * Brand new, beautifully renovated re-located QLDer
- * Exclusive 'The Meadows', just minutes walk into the village
- * Surrounded by farmland offering a lovely rural outlook
- * Meticulously renovated with a striking combination of modern and character features throughout
- * Bi-folding doors out to covered rear deck
- * Separate master bedroom, bathroom and living room downstairs
- * Low maintenance, landscaped gardens

This delightful Queenslander home has been stylishly renovated combining both modern and character features to create a striking family home. Comprising of 3 bedrooms, study, 2 bathrooms, 2 lounges and 2 separate outdoor entertaining areas, this property offers space with the quintessential Bangalow charm.

From the moment you enter the front door, you will appreciate the history and charm of this 1920's home with its high ceilings, intricate 'art deco' cornices and the stunning, original timber floorboards throughout. Only recently completed, the home is being offered for sale in brand new condition.

TYPE: For Sale

INTERNET ID: 8230467

SALE DETAILS

**\$1,075,000 to
\$1,125,000**

CONTACT DETAILS

Elders Bangalow
Shop 3, 5 Lismore Road
Bangalow, NSW
02 6687 1500

Janice Maple
0401 026 359

You will entertain in style with open plan living and a contemporary kitchen at the heart of the house. The upstairs lounge delivers a stunning panorama of the rural landscape and opens onto the deck with bi-fold doors, creating a large entertaining area. A generous main bedroom with bay window, good sized second bedroom and study all flow from the main living area. There is a modern, stylish bathroom on each level with beautifully locally designed tiles.

A custom designed blackbutt staircase descends to the lower level and creates a striking, architectural feature in the home. The lower level is spacious and brimming with northern light showcasing views to the garden. Polished concrete floors create a modern haven for the master suite (or guest accommodation) with its own lounge, large bedroom with built in robe and bathroom.

A second outdoor entertaining area downstairs is the perfect place to relax and enjoy the surrounding gardens and the peace and quiet of Bangalow. There is plenty of scope to add a pool should you wish.

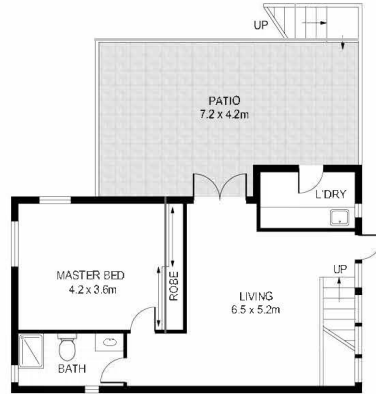
The home is located in The Meadows, on the edge of the village and just minutes walk to the main street of Bangalow. The Meadows is surrounded by farmland and the rolling hills Bangalow is famous for. The owners are definite sellers, so don't delay with an inspection.

- Land Area 600 square metres
- Bedrooms: 3
- Bathrooms: 2
- Double carport









Internal: 162 m²
 Excludes all external structures
 Eg: decks, patios, verandahs etc

3 2 2

15 Meadows Close,
 Bangalow

Scale in metres. Indicative only. All information contained herein is obtained from sources we believe to be accurate. We cannot guarantee its accuracy. Interested persons should make and rely on their own enquiries