



16 WATTLE DRIVE, VICTOR HARBOR

Home is where the heart is - on 1750sqm and a short stroll to the beach of course.

Located just a short walk to the Victor Harbor Primary School, moments to the best swimming and walking beach in Victor Harbor, A huge 1750sqm, 2 allotments amalgamated to 1 title, 2 street access from Wattle Drive and The Drive make for easy subdivision and a substantial brick home which has been loved and enjoyed for the past 20 years by its current owner.

Comprising a 4 bedroom home with ensuite to master, a newer addition, large open plan living/family, formal lounge, and kitchen with adjoining meals. There is a double carport on The Drive entrance making it a flat walk into the home.

An elevated tree filled setting, lots of windows and a delightfully welcoming homely feel you just can't manufacture - it's within the walls.

If that isn't enough to entice you - look at the photos as a picture is worth a 1000 words.

We are looking for someone who is after space to enjoy close to the town centre, perhaps you appreciate long walks on the beach or taking your dog for a run. Maybe room for the family to play or grow whilst being able to walk to school. Maybe you like the solid homes of the 60s and have a vision to modernise or expand - the possibilities are endless.

Other features: Built-In Wardrobes, Close to Schools, Close to Shops, Close to Transport, Garden, 2 street access

TYPE: For Sale

INTERNET ID: 18617352

SALE DETAILS

\$435,000

CONTACT DETAILS

Elders Victor Harbor
11-13 Victoria Street
VICTOR HARBOR, SA
08 8555 9000
RLA: 62833

Heidi Zitterbart
0410 572 208

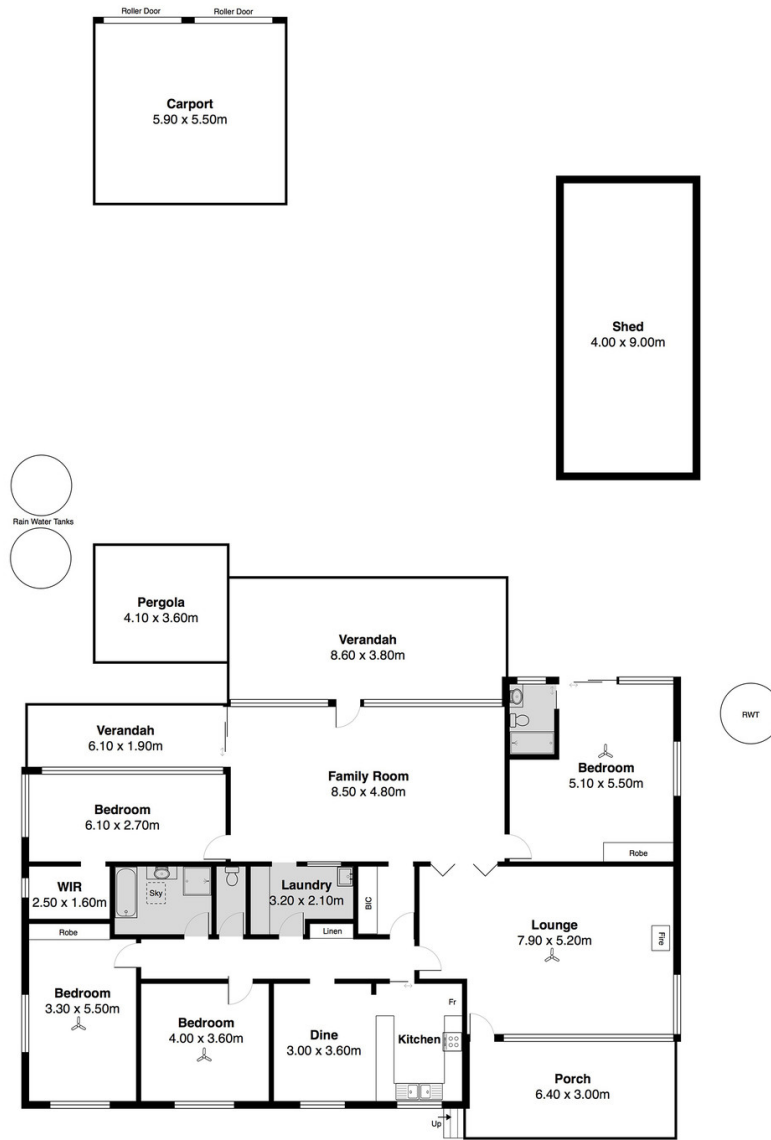
- Land Area 1750 square metres
- Bedrooms: 4
- Bathrooms: 2
- Single garage
- Double carport











All measurements are approximate and for display purposes only