

## 2/27 Clarke Street, ARALUEN

Duplex on 813 m2 !

Come and see this privately built 3 bedroom home secluded on a battle-axe block backing onto bushland.

Enter into a tiled open plan living area. The dining room has sliding door access to the outdoors.

The kitchen boasts gas cooking and plenty of cupboards with space for a dishwasher and a large fridge.

All bedrooms have built in robes. The master bedroom has a modern ensuite and sliding door to an entertainment area.

The hallway has linen cupboards and built-in cubes.

The spacious bathroom has a large shower, separate bath, vanity and toilet.

There is undercover parking and plenty of room for extra parking in the driveway.

Side gates access the large private backyard with lawn and views of natural central beauty, with loads of room to let your inspiration run wild.

A garden shed completes the property and solar hot water is an added bonus.

The particulars contained herein are supplied for information only and shall not be taken as a representation in any respect on the part of the vendor or its agent. Interested parties should contact the nominated person or office for full and current details.

**TYPE:** For Sale

**INTERNET ID:** 18560321

**SALE DETAILS**

**Offers Over \$415,000**

**CONTACT DETAILS**

**Alice Springs**

11 Railway Terrace

Alice Springs, NT

08 8950 3200

**Marion Burton**

0418 897 547

It's not often a duplex on such a large block comes on the market. Best to call Marion sooner than later to inspect before it's too late!

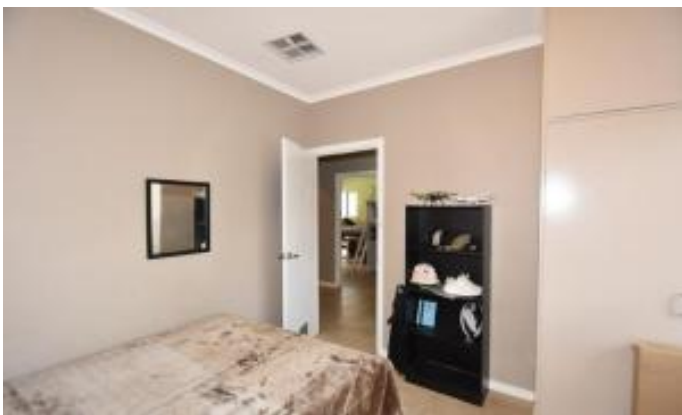
Lot No: 2528 Area Under Title: 813 m2 Zoning: SD Council Rates: \$1605 pa Insurance/Water; 50% Rental: \$490 wk Lease Expiry: 23 Feb 18 Easements: Sewerage front of driveway Year Built: Approx 1996

Other features: Built-In Wardrobes, Close to Schools, Close to Shops, Close to Transport

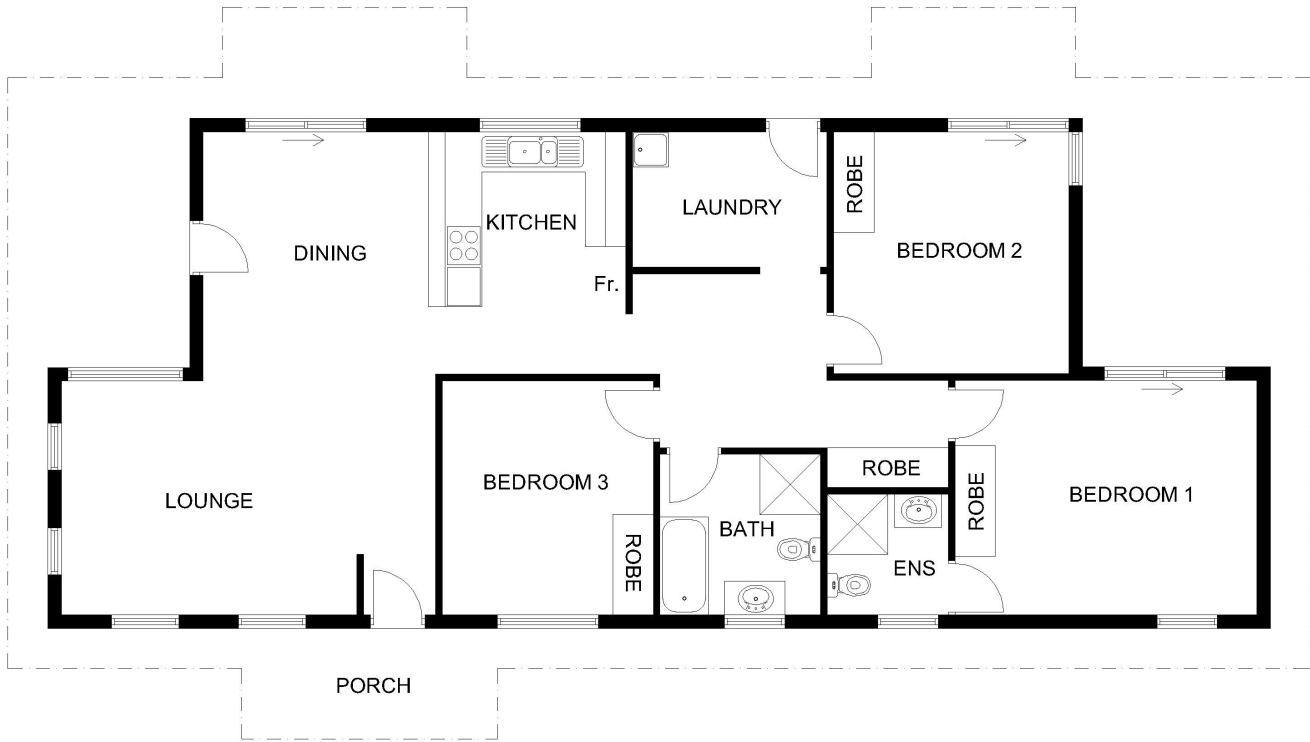
- Land Area 813 square metres
- Bedrooms: 3
- Bathrooms: 2
- Car Parks: 2
- Single carport
- Air Conditioning











2/27 CLARKE STREET, ARA LUEN, NT  
Whilst all due care is taken, all measurements are approximate.  
Do not measure or scale from this drawing.  
Total building area: 117.5m<sup>2</sup>