



37 Clifton Drive, PORT MACQUARIE

Dual Street Access, Savvy Investors Take Note

This brick & tile home set on 759sqm is one of the very few blocks situated on Clifton drive that feature dual street access from both Clifton Drive and The Beam, this home has so much to offer the young family looking for space with convenience to town or the savvy investor looking for a block that has incredible potential subject to council approval.

- Dual street access
 - Split system air conditioning
 - Across the road from Clifton Drive Super Clinic
 - Great investment opportunity or first home
 - Large backyard for the kids
 - Less than 5 minutes to town
 - Fully fenced front & rear yards
-
- Bedrooms: 3
 - Bathrooms: 2
 - Single garage

TYPE: Sold

INTERNET ID: 18237787

AUCTION DETAILS

1:00pm, Saturday February 3rd, 2018. CWA Room, Town Green Square 1pm

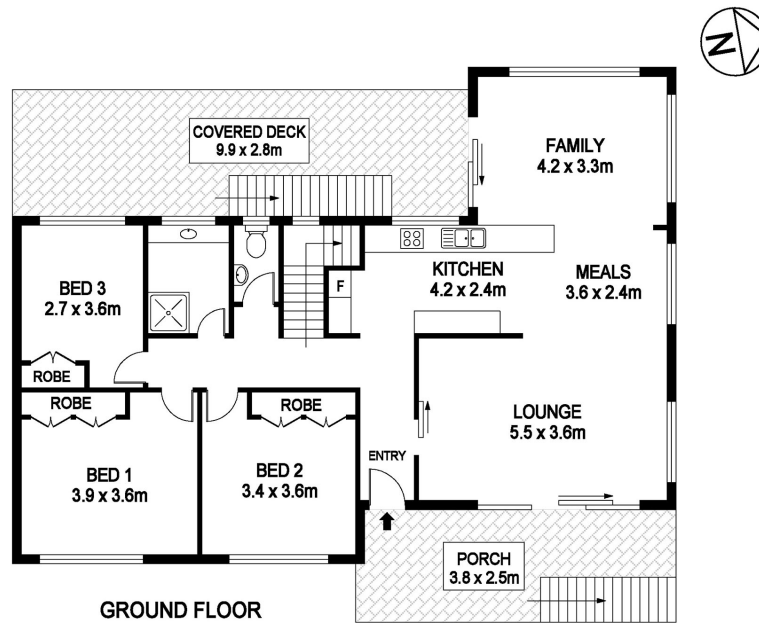
CONTACT DETAILS

Elders Real Estate
62 Clarence Street
Port Macquarie, NSW
02 6584 1199

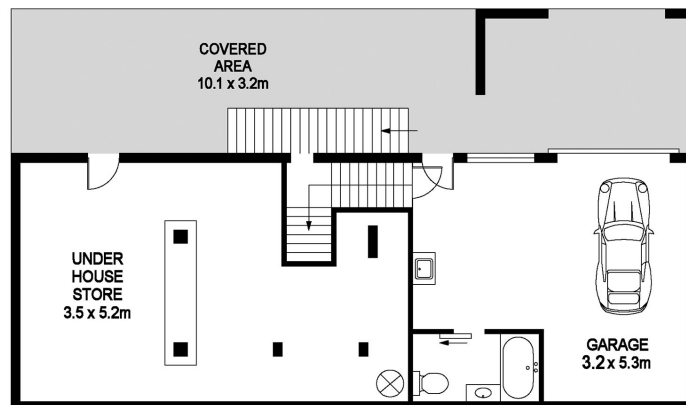
Brendan Stead
0447 788 509







GROUND FLOOR



LOWER GROUND FLOOR

GROUND FL : 110.0m²
 LOWER GROUND FL : 78.4m²
 DECK : 27.7m²

37 Clifton Dr, Port Macquarie

DISCLAIMER

PLANS SHOWN ARE FOR MARKETING PURPOSES ONLY. ALL DIMENSIONS ARE APPROXIMATE AND NOT TO SCALE. THEY ARE SUBJECT TO ERRORS AND INACCURACIES AND NO LIABILITY WILL BE ACCEPTED. INTERESTED PARTIES SHOULD MAKE THEIR OWN INQUIRES.

