



105/37 Pacific Drive, PORT MACQUARIE

Perfect Addition To Your Portfolio!

The perfect opportunity to invest into Port Macquarie's beach side growth and holiday lifestyle. Leave in the holiday income, live in or let out on a short term basis.

- Just up the road from cafes, shops and restaurants
- Fully furnished & across the road from the beach
- Open plan kitchen and living areas with large sunny courtyard
- Split system air conditioning in living area
- Secure underground parking & internal laundry
- The complex includes a fantastic pool, spa & BBQ area
- Currently managed by the onsite management, showing good earnings

* Agent Declares Interest

- Bedrooms: 2
- Bathrooms: 1
- Single garage

TYPE: Sold

INTERNET ID: 18307778

SALE DETAILS

\$215,000

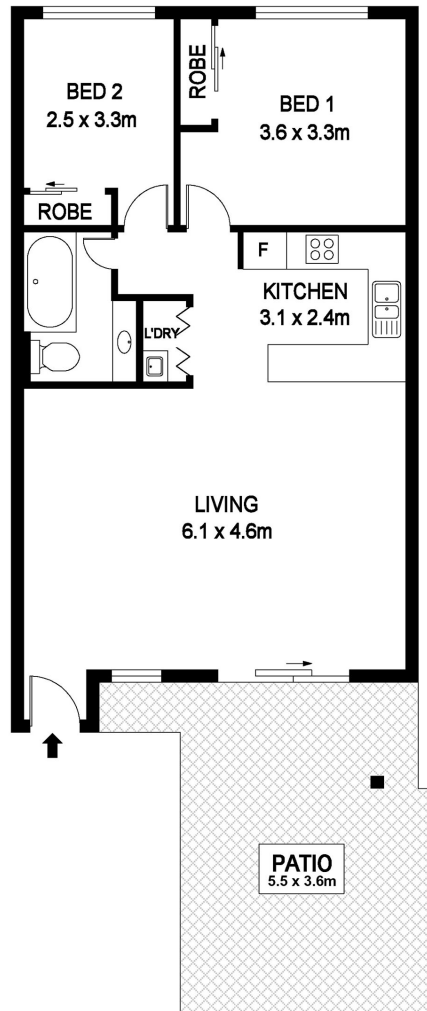
CONTACT DETAILS

Elders Real Estate
62 Clarence Street
Port Macquarie, NSW
02 6584 1199

Tim Joyce
0452 556 266







105/37 Pacific Dr, Port Macquarie

INTERNAL : 62.2m²

DISCLAIMER

PLANS SHOWN ARE FOR MARKETING PURPOSES ONLY. ALL DIMENSIONS ARE APPROXIMATE AND NOT TO SCALE. THEY ARE SUBJECT TO ERRORS AND INACCURACIES AND NO LIABILITY WILL BE ACCEPTED. INTERESTED PARTIES SHOULD MAKE THEIR OWN INQUIRES.

