

4/27 Albrecht Drive, LARAPINTA

PERFECT PACKAGE!

The investor or owner occupier in you will easily see the potential in this offering. This attractive unit is located in a small complex of only four units. You, or your tenant, on entering the residence will be greeted by a light and airy open plan kitchen and living area. Freshly painted and with new floors throughout, the residence is very low maintenance.

No difficulties finding a place for everything with ample cupboard and bench space in the well appointed kitchen. There is a great breakfast bar and a bonus dishwasher.

Ideal privacy comes with the bedrooms set apart. The main bedroom is very comfortable with a walk through robe to the roomy bathroom with a separate shower, full size bath and vanity. The second bedroom with a built in robe, is well positioned being located on the other side of the living area.

Down the passage is the practical laundry with easy access to the service area. Extra storage cupboards are a welcome sight.

Be amazed with the outdoors. Off the living room through double sliding glass doors, a full length verandah (8x3m) helps to keep the indoors cool. There is space to entertain and relax whilst enjoying the garden.

The spacious side and rear yard has been well planned with a number of mature native

The particulars contained herein are supplied for information only and shall not be taken as a representation in any respect on the part of the vendor or its agent. Interested parties should contact the nominated person or office for full and current details.

TYPE: For Sale

INTERNET ID: 17984969

SALE DETAILS

New Price \$319,999!

CONTACT DETAILS

Alice Springs

11 Railway Terrace

Alice Springs, NT

08 8950 3200

Jo-Anne Pulsford

0419 810 129

shrubs and trees and must have garden shed. There is an additional parking space available within the enclosed yard. Potential still for a veggie patch, spa and the like.

Units like this don't last long on the market - so be quick to inspect then nest or invest!!!

Land: 266m2 Zoning: Multiple Dwelling Easements: Nil Council Rates: \$1605pa Body Corporate Fees: \$730pq Rental: \$380-\$400pw

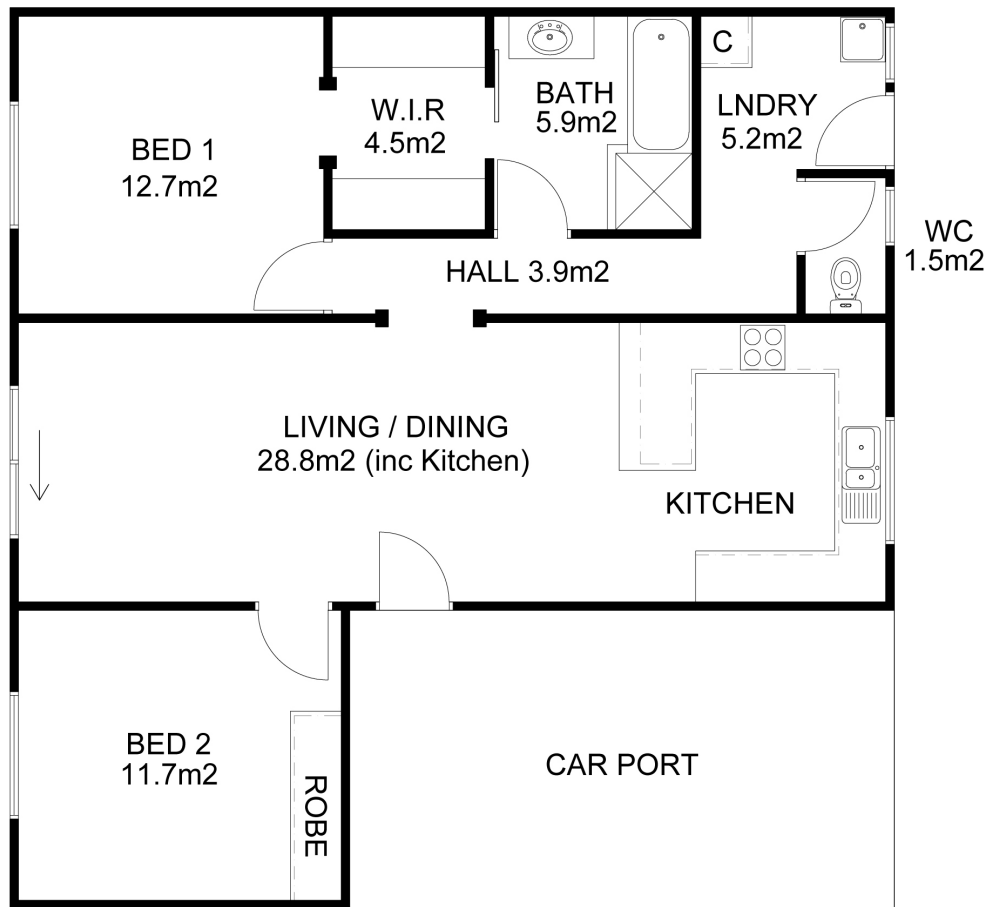
Other features: Built-In Wardrobes, Close to Schools, Close to Shops, Close to Transport, Garden

- Land Area 266 square metres
- Bedrooms: 2
- Bathrooms: 1
- Car Parks: 1
- Single carport
- Air Conditioning









4/27 ALBRECHT DRIVE, LARAPINTA, NT

Whilst all due care is taken, all measurements are approximate.
Do not measure or scale from this drawing.

Total floor area requiring new floor finishes - NOT including bathroom & toilet: 66.8m² (say 67m²)
Total floor area of house (including internal walls): 83.5m²

