



289 Rotherwood Road, LOWER MARSHES

'SALISBURY' - PRIVATE COUNTRY RETREAT

Set up in the foothills of Table Mountain is this elegant homestead built in 1920. It has King Billy doors and 4 original mantel pieces which add class to a comfortable home. It has a floor plan which is surprisingly modern and practical as there is a large open plan kitchen/dining/lounge area which opens into a sunroom. It is heated by both a large wood heater and a heat pump. There are 2 large bedrooms downstairs and the large attic could be simply converted from one to two bedrooms if required. Located conveniently around the house are a woodshed, garden shed and a chook house.

Originally being the homestead for a large farm there are lots of sheds. For those interested in shooting or home killing there is a functioning cool room. There are large cattle yards and a three stand shearing shed. There is also a workshop, grain silo, tack room and machinery shed.

The 21 hectares (52 acres) approx. is split into 3 small paddocks around the house and one large one running down to the waterhole. It is healthy stock carrying country and its South Easterly aspect means its great pasture is sheltered from drying prevailing winds.

If you are looking for a place to run horses, a base for shooting or a tree change a little over an hour from Hobart then please don't hesitate to contact for an inspection.

Other features: Garden

TYPE: For Sale

INTERNET ID: 18261400

SALE DETAILS

\$395,000

CONTACT DETAILS

Brown & Banks - Hobart

141 Murray Street

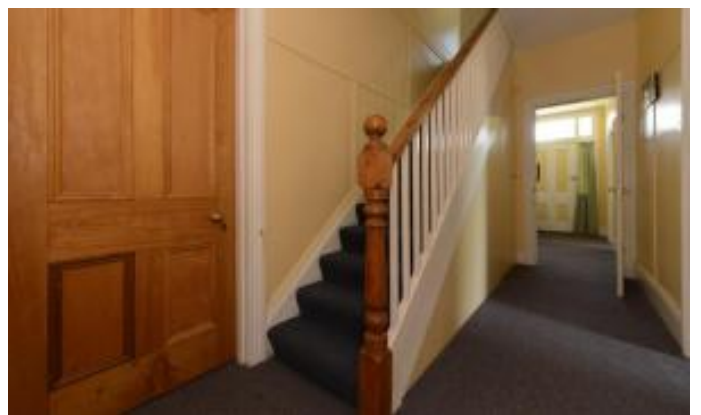
HOBART, TAS

03 6231 0400

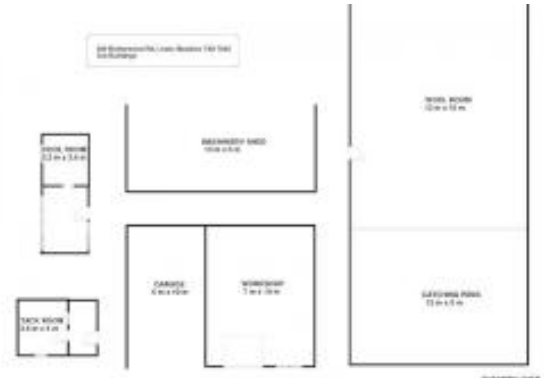
Chris Johnston

0408355556

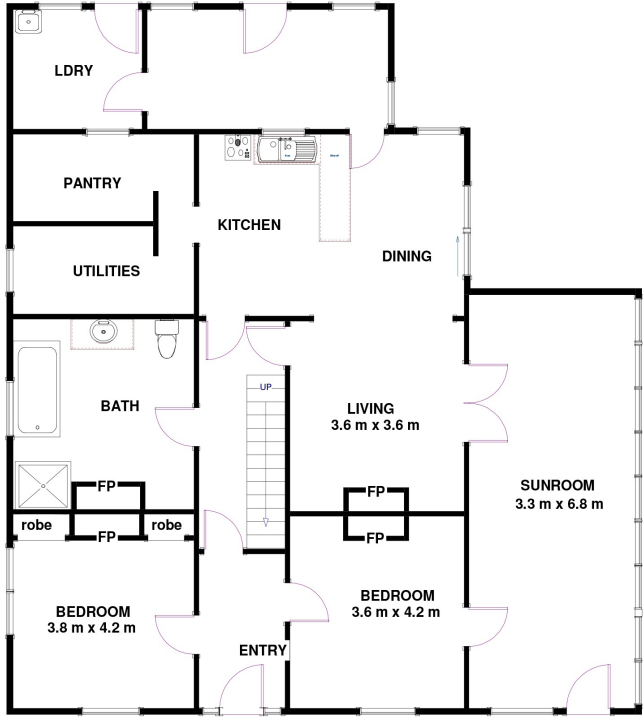
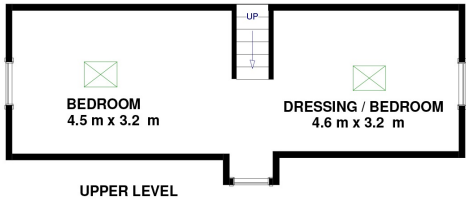
- Land Area 20.49 hectares
- Bedrooms: 3
- Bathrooms: 1
- Car Parks: 10
- Single garage
- 4 car carport
- Air Conditioning







289 Rotherwood Rd, Lower Marshes TAS 7030
Approx Internal Space 197 sqm



Disclaimer: All measurements and floor plan details are for informational purposes only. We make no warranties or representations, express or implied, as to the accuracy of this rendering. Independent property size verification is recommended. The approximate internal area measurement does not directly reflect the government evaluation of the property area.