

15/50 Station Street, WARATAH

Refreshed 2 Bedroom Unit with Balcony

This refurbished unit may be just what you are looking for, it has an open living area with floating timber veneer flooring, a modern kitchen area, modern tiled bathroom with space for a small washing machine, it has a split system air conditioner and a balcony.

Features include:

- 2 Bedrooms with built-in mirror wardrobes
- Balcony off Living Area with some privacy screening
- Open living lounge room area with floating timber veneer flooring
- Modern kitchen, gas cooktop and under bench oven
- Pull out style range hood
- Wall cupboards and under bench cupboards
- Timber venetians throughout
- Modern tiled bathroom with wall mounted floating vanity unit
- Shower Recess, Toilet and Laundry Tap for Cold Water Washing

If you prefer there is a shared laundry on the ground floor of the complex - Owners/Tenants get security keys

Under Cover Parking for one car

TYPE: Sold

INTERNET ID: 18237282

SALE DETAILS

Price Change \$365,000

CONTACT DETAILS

**Elders Real Estate
Lambton (N'cle)
2/125 Elder Street
NEWCASTLE, NSW
02 4952 3744**

**Sue Odgers
0418 689815**

Strata Fees \$2226.60 per annum, or \$556.65 per quarter,

Newcastle City Council Rates \$1,044.44 per annum currently,

Water Rates approx. \$809.04 per annum.

Light and airy top floor location, close to Waratah Shopping Village, walk to nearby Waratah Train Station, buses nearby on Turton Road, Mayfield shopping only minutes away, walk to St Phillips private school and the Mater Hospital is nearby.

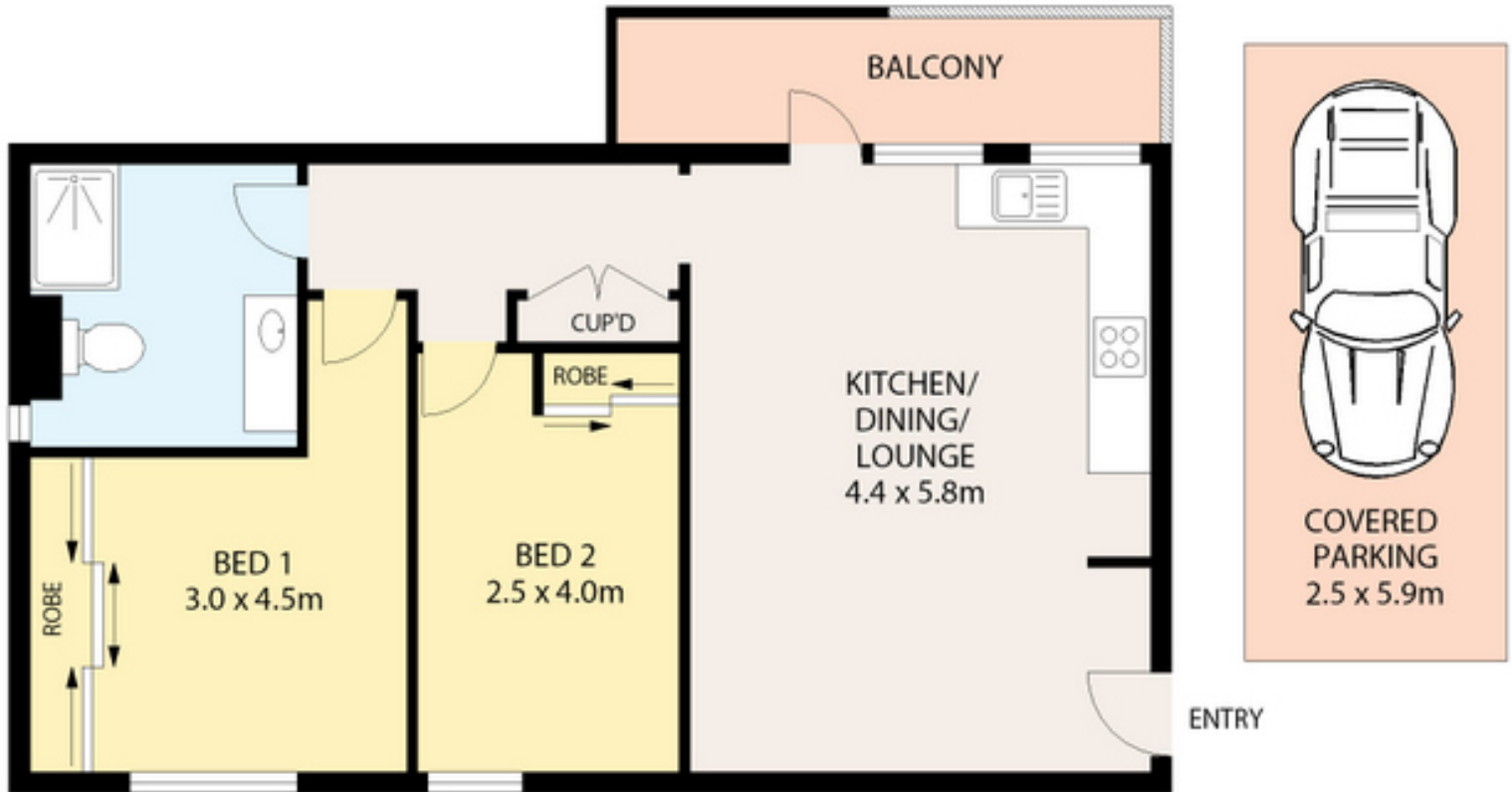
The property has a current tenancy in place until 14th August 2018 paying \$315.00p.w.

If you are looking for a great opportunity this unit may suit your requirements.

Other features: Built-In Wardrobes, Close to Schools, Close to Shops, Close to Transport, Terrace/Balcony

- Bedrooms: 2
- Bathrooms: 1
- Single carport
- Air Conditioning





ENTRY LEVEL



Floor and site plans are provided for marketing purposes only. Measurements are approximate and not to scale. Interested persons should rely on their own enquiries.



15/50 Station Street, Waratah

