

## 16 Union Street, KILMORE

### SOLID INVESTMENT – Buy Now, Reap The Benefits Later

The Northern Growth corridor ends one suburb away from this undisturbed renovated beauty.

Simple in design but spectacular in its potential, the property was completely gutted 8 years ago and put back together with a modern flair.

The main bedroom offers a walk in robe, whilst the second bedroom offers a triple robe. Polished hardwood floors & ceiling roses adorn the kitchen, lounge, meals area. The builder certainly had storage in mind with copious amounts of cupboard space.

The home is a convenient 11 kilometres from the Hume Highway and within walking distance to Assumption College, ALDI, COLES, local eateries, pubs and main street boutiques.

Within a 5 minute drive you have access to the International School, Kilmore & District Hospital, Golf Club & Kilmore East Train Station.

The real prize here is the HALF ACRE BLOCK which could turn a solid investment into a pleasant profit in years to come.

For inspections call Renee 0425 437 250

Information has been provided to Elders Real Estate from a third party.

We take no responsibility for its accuracy and encourage buyers to perform their due

The particulars contained herein are supplied for information only and shall not be taken as a representation in any respect on the part of the vendor or its agent. Interested parties should contact the nominated person or office for full and current details.

**TYPE:** Sold

**INTERNET ID:** 18079469

**SALE DETAILS**

**HALF ACRE BLOCK!!!**

**\*\*\$495,000\*\***

**CONTACT DETAILS**

**ELDERS, WHITTLESEA**

Shop 1/75 Church Street

WHITTLESEA, VIC

03 9716 2000

**Renee Cornish**

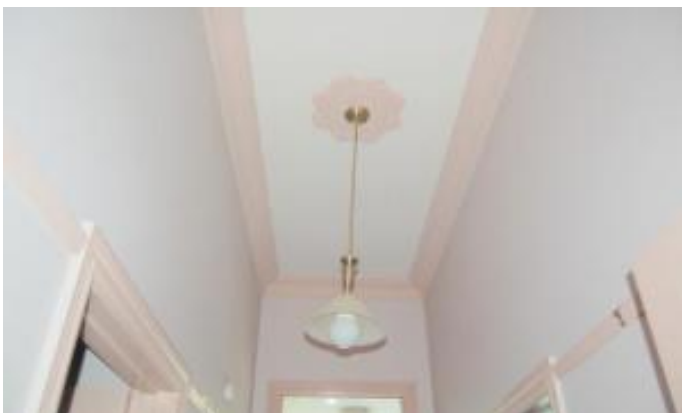
0425 437 250

diligence.

Due Diligence Checklist - <https://www.consumer.vic.gov.au/duediligencechecklist>

Other features: Built-In Wardrobes, Close to Schools, Close to Shops, Close to Transport, Garden, Decking

- Bedrooms: 2
- Bathrooms: 1
- Car Parks: 1
- Single garage
- Air Conditioning







99.98m  
16 Union Street,  
KILMORE  
99.98m

