



49 HENDERSON ROAD, ALEXANDRIA

GREAT LOCATION!!!!!! Sat 27 Jan 2018 (11:40 AM - 12:00 PM)

This very large Executive style Apartment is now available for your inspection.

It is located within walking distance to 2 train Stations, local shops and pubs as well as a good walking distance to Woolworth Erskineville all this within a short drive to Sydney CBD.

This home would a variety of tenants including an executive who likes to entertain or professionals who like to share this nice space within a short distance from the CBD action and night life.

What we like:

- 2- Large entertainer's balcony with extensive views
- 3- 1 lock up garages underground
- 4- 3 bedrooms with new built-ins
- 5- 2 bathrooms including ensuite in master bedroom
- 6- Open plan modern kitchen
- 7- Tiled floor
- 8- Large lounge and dining (refer to measurements on floor plans)
- 9- Freshly painted

TYPE: For Rent

INTERNET ID: 17536146

RENTAL DETAILS

Rent / Lease:

\$1,100 per week

CONTACT DETAILS

Elders RealEstate Sydney City South

99 Regent Street
Chippendale, NSW
02 9699 5036

Joanne Wehbe
0433070791

What we love is the close proximity to:

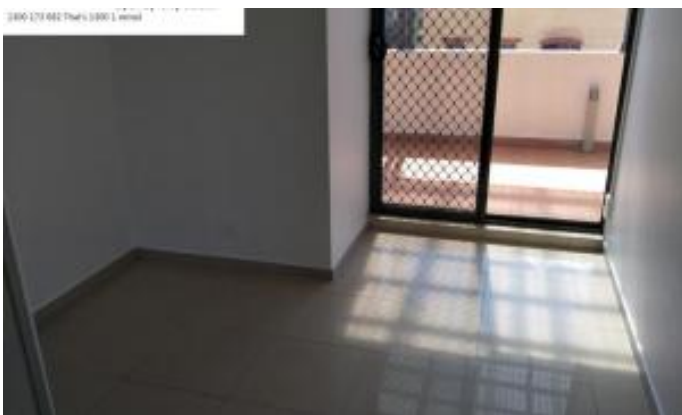
- 1- Cafes,
- 2- Restaurants
- 3- The short drive or relaxing walk to Erskineville, Waterloo, Alexandria and Redfern Shops.
- 4- Transport,
- 5- Parks
- 6- Local schools
- 7- University of Sydney
- 8- Technology Park, etc...

Entry from the corner of Station Place and Rowley Street

Call us now for an inspection on 1300 1 rentals (That's 1300 1 73682)

Other features: Built-In Wardrobes, Close to Schools, Close to Shops, Close to Transport, Secure Parking

- This property is: Unfurnished
- Pets: No
- Available Now
- Bedrooms: 3
- Bathrooms: 2
- Single garage
- Air Conditioning

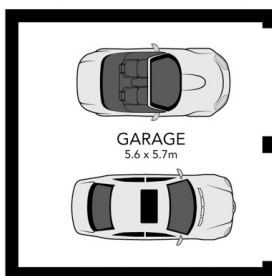




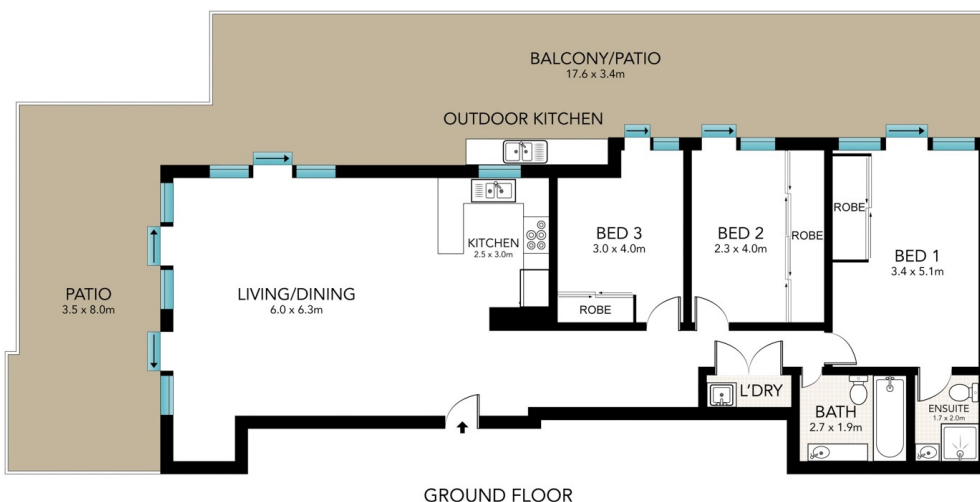


1300 173 682 That's 1300 1 rental

Real Estate Sydney City South



SECURE BASEMENT GARAGE



GROUND FLOOR



INT: 146 m²
EXT: 89 m²



This floor plan prepared by WWW.CRYINGOUTLOUD.COM.AU for illustration purposes only. This document does constitute any part of an offer or contract. Dimensions are approximate only. Copyright 2017© Crying Out Loud. All Rights Reserved.

144/49 Henderson Road, Alexandria